

SUBMISSION TO COMMUNITY HOUSING AND HEALTH (OVERVIEW AND SCRUTINY) COMMITTEE

Date: 29th September 2014

Agenda Item: 4a

Contact Officer: Helen Titterton

Telephone: 01543 308700

SUBMISSION BY THE CABINET MEMBER FOR COMMUNITY, HOUSING AND HEALTH

CONSULTATION ON THE FUTURE OF DAY CASE THEATRE AT SIR ROBERT PEEL HOSPITAL

1. Purpose of Report

- 1.1 To advise Members that Burton Hospitals NHS Foundation Trust (BHFT) and South East Staffordshire and Seisdon Peninsula Clinical Commissioning Group (SESCCG) have initiated a consultation regarding the future of the day case theatre at Sir Robert Peel Hospital (SRP).
- 1.2 To advise that Rachel McKeown, Associate Director for Community and Clinical Support Services Division, Burton Hospitals Foundation Trust and Anna Hammond, Chief Operating Officer, SESCCG will attend the meeting to explain the rationale for the proposal and respond to comments and questions.

2. Background

- 2.1 Sir Robert Peel Community Hospital (SRP) has been part of BHFT since 2011. In 2013, 1733 patients used the day case theatre (of which 613 were residents of Lichfield District). However, since 2008 the use of the theatre at SRP has been declining as patients have chosen to attend other hospitals for their procedure. If the decline in usage continues, there will come a point when maintaining the necessary quality standard will become extremely difficult.
- 2.2 Although equipment in the theatre is maintained regularly, it is getting to the point where some of the equipment will need replacing and this will involve a significant investment for the NHS. It is felt this might not be the best use of NHS money as the number of patients using the service is going down.
- 2.3 In 2013 Sir Bruce Keogh, on behalf of the Department of Health, visited BHFT and SRP and he asked the Trust to either increase the use of the theatre or consider reducing the current services. Despite trying to find solutions to the theatre challenge at SRP, the local NHS has now come to the conclusion that closure of the day case theatre and part of the surgical ward is the best option.
- 2.4 Just under 30 patients attend SRP every week for surgery. In future, patients will be able to receive day case surgery at Good Hope Hospital in Sutton Coldfield or at The Treatment Centre in Burton-on-Trent. Commissioners are also in the process of developing community based surgical options, in GP practices and health centres.
- 2.5 A consultation document has been produced providing the background and rationale to the proposal - attached at **Appendix A**. Patients, residents, carers, staff, GPs and anyone who has a view on the future of day case surgery currently offered at SRP are being invited to give their views on the proposal. The independent watchdog Healthwatch Staffordshire launched the public consultation on Tuesday 23rd September which will run until 3rd November. The consultation will include a number of focus groups and an open public

meeting, as well as making questionnaires available at GP surgeries, SRP, BHFT, Council offices, etc. – and online.

- 2.6 In mid-November the outcomes of the consultation will be considered and in December the Board of BHFT will receive the final report and make a decision about the future of day case surgery at SRP. A public announcement will be made as soon after the Board meeting as possible.

3. Recommendation

- 3.1 Members are requested to consider and comment on the proposal to close the day case theatre at SRP.

Public Consultation

Consultation on the Future of Day Case Theatre at Sir Robert Peel Community Hospital Tamworth



FOR MORE INFORMATION AND TO MAKE YOUR VOICE COUNT PLEASE CONTACT US



Email: contactus@ecstaffs.co.uk



Freephone: 0800 051 8371



Website: www.healthwatchstaffordshire.co.uk/have-your-say/consultations/



Online Survey: https://www.surveymonkey.com/s/SRP_Theatre_Consultation



Address: Suite 2 Opus House, Priestly Court, Staffordshire Technology Park, Stafford. ST18 0LQ



@HWStaffordshire & #TamWorthSaying

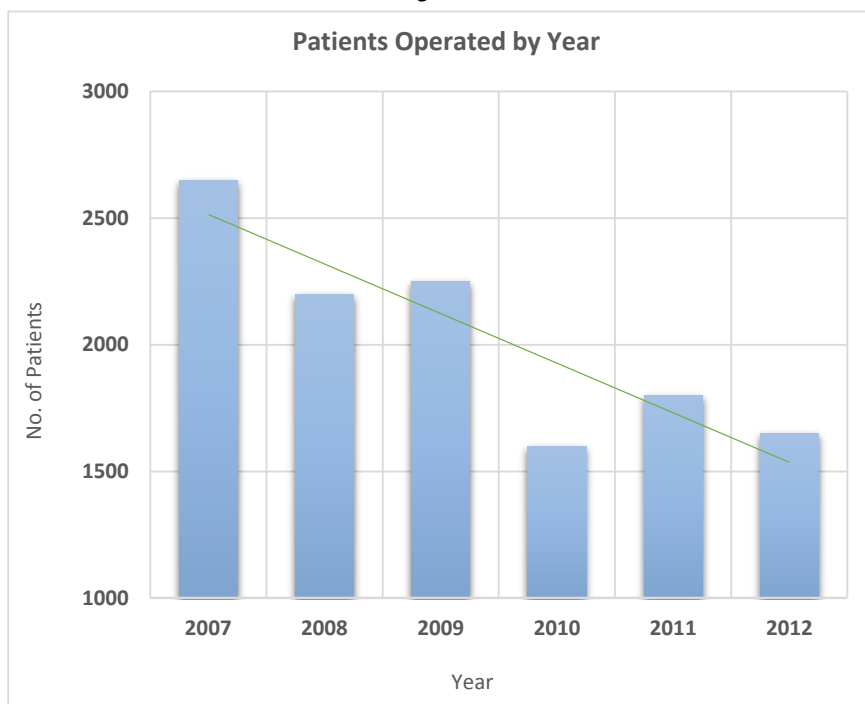
Sir Robert Peel Community Hospital (SRP) has been part of Burton Hospitals NHS Foundation Trust, since 2011.

SRP provides a range of services for patients from Tamworth, Lichfield and the surrounding areas, including:

- Day case theatre (operations that do not require an overnight stay)
- Outpatient clinics, e.g. Ophthalmology
- Inpatient care after treatment at a number of local hospitals including Burton and Good Hope
- Minor injuries unit
- A pharmacy for patients
- X-ray facilities

In addition, other NHS organisations provide services at the site, including Staffordshire and Stoke on Trent Partnership Trust who provide a number of services including physiotherapy and occupational therapy.

Figure 1



Since 2008 the use of the theatre at SRP has been going down (as shown in figure 1 above). This is because of a number of issues including:

- changes in medical practice, for example, vasectomies used to be undertaken in day case theatre, but are now undertaken in GP surgeries
- changes to anaesthetic criteria mean all patients who are operated on at SRP must have a Body Mass Index of less than 35 and no other health related conditions;
- and fewer non-complex day case procedures being commissioned for example, the removal of lumps and bumps.

There are, on average, 40 theatre sessions available each month, a session is usually a morning or an afternoon. At the moment, only 72% of theatre sessions are utilised between 9 am to 5 pm Monday to Friday due to insufficient demand.



If less and less patients come to SRP for their surgery, there will come a point in the future where maintaining the necessary quality standard will be extremely difficult.

The equipment that is used in the theatre at SRP is maintained regularly and it is part of a rolling replacement programme. It is coming to the point where the equipment needs to be replaced and this would involve a significant investment for the NHS. Making this investment would not necessarily be the best use of money, especially when the number of patients using the service is going down.



All of these issues mean that offering day case surgery at SRP will not be clinically viable for patients in the future. Therefore, the local NHS is recommending closure of day case theatre at SRP, whilst ensuring patients can be treated elsewhere.

We want to hear from you about your thoughts and ideas for our plans.

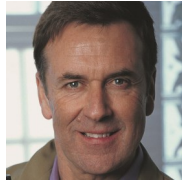
The Department of Health—Sir Bruce Keogh's Comments....

In May 2013, Sir Bruce Keogh's team, on behalf of the Department of Health who are responsible for all NHS services, visited Burton Hospitals NHS Foundation Trust. As part of their review they wrote:

- ***(The Trust should...)... increase the utilisation of existing inpatient and theatre capacity in the community hospital sites in the short and medium-term to assist the urgent care pathway.***
- ***If this is not feasible the Trust should consider reducing the current services it offers on its Community sites, e.g. theatres***



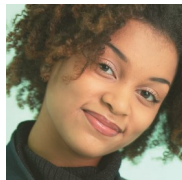
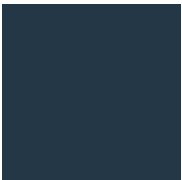
Sir Bruce Keogh



Future Demand

Burton Hospitals NHS Foundation Trust reviewed the use of its day case theatre with a view to increasing its usage but for the following reasons there is no anticipated increase in future demand for day case surgery at SRP. The reasons are:

- Burton Hospitals NHS Foundation Trust runs the Treatment Centre on the Burton site where day case surgery is undertaken. Local patients can choose that option, rather than travelling to Tamworth.
- Heart of England NHS Foundation Trust (specifically Good Hope Hospital) currently operate in the theatre but they have confirmed they do not need to increase their use of the theatre facility.
- The challenging NHS financial position means that there is an emphasis on stopping procedures of limited clinical value, which in turn means there is less need for day case operating time.

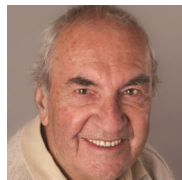
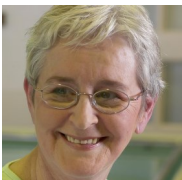
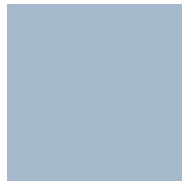


What does this mean for me?

Just under 30 patients come to SRP every week for day case surgery; in the future those patients will no longer do so.

Patients can choose to attend any NHS hospital for their day case surgery but local options are:

- The Treatment Centre in Burton-on-Trent which is part of Burton Hospitals NHS Foundation Trust,
- Good Hope Hospital in Sutton Coldfield, part of Heart of England NHS Foundation Trust,
- Your local GP practice or health centre.



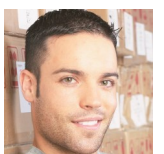
The NHS knows that the changes will affect patients differently, making it easier for some and more difficult for others, e.g. some journeys may take longer and some may be quicker.

We want to hear your views about the next steps outlined below:

The local NHS and social care organisations, Councils, MPs' representatives and the League of Friends have all been taking part in advisory board meetings. The meetings have discussed how we can provide the appropriate mechanism and delivery for consulting the communities of Tamworth and Lichfield on the proposed changes.

The recommendation for closure and the next steps have been the focus of those meetings.

- The local NHS will recommend closure of the theatre and part of the surgical ward at Sir Robert Peel Community Hospital
- Patients will be able to choose any NHS hospital for their day case surgery but local options are The Treatment Centre in Burton-on-Trent or Good Hope Hospital
- Commissioners are in the process of developing community based surgical options, in GP practices and health centres.



Question

IN YOUR OPINION, ARE THERE ANY CONSIDERATIONS THAT HAVE BEEN OVERLOOKED WHEN RECOMMENDING TO CLOSE THEATRE AT SIR ROBERT PEEL HOSPITAL, TAMWORTH?

Guidance

E.g.—Transport / Coordination of services / Availability / Accessibility

Question

IN YOUR OPINION HOW BEST CAN HEALTH SERVICES REDUCE THE IMPACT OF THE RECOMMENDED CLOSURE ON LOCAL RESIDENTS AND SERVICE USERS?

Guidance

E.g.—Improved communications from provider during process / Better transport / Accessibility

In the next 12 - 24 Months there are going to be further reconfigurations of health services in your area.
Please visit this link to watch our short video on future changes: <http://www.youtube.com/watch?v=UqWz7i4fYXc>

This next section asks questions related to such reconfiguration.

What health services do you think should be provided locally, either in your own home or your local community?

Why do these services need to be local?

How should the public in Tamworth and Lichfield be asked for their opinions and ideas about future changes to services ?

What services should be provided by community hospitals?

How do you think changes to services at community hospitals could affect you / relatives / friends / local community?

If you have any other comments or suggestions please use the space below.

What Happens Next?

All views and opinions expressed during the consultation will be collated, analysed and reported back to the Advisory Group. This will go before the Board of Burton Hospitals NHS Foundation Trust in December 2014 who will then make the final decision considering all relevant data. The decision will be publicised to the public thereafter.

The consultation and report will be compiled and analysed by Engaging Communities Staffordshire. We are an independent Community Interest Company who have been commissioned by the Trust to undertake the consultation with a fair and transparent approach focused on the local patients and service users in Tamworth and Lichfield.



FOR MORE INFORMATION AND TO MAKE YOUR VOICE COUNT PLEASE CONTACT US



Email: contactus@ecstaffs.co.uk



Freephone: 0800 051 8371



Website: www.healthwatchstaffordshire.co.uk/have-your-say/consultations/



Online Survey: https://www.surveymonkey.com/s/SRP_Theatre_Consultation



Address: Suite 2 Opus House, Priestly Court, Staffordshire Technology Park, Stafford. ST18 0LQ



@HWStaffordshire & #TamWorthSaying